

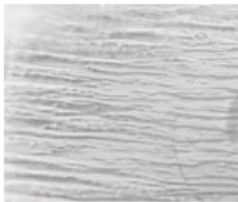
JSG *Oceana* Oasis Rectangle Undermount



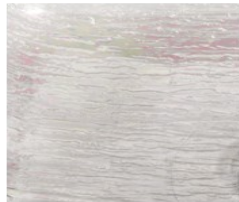
Shown: Platinum (007-407-500)

- Drain Hole: 1 3/4"
- Basin dimensions: 18 5/8" x 12 1/4"
- Rim: Flat
- Model: 007-407-xxx
- Available in 7 colors

Crystal
007-407-000



Crystal Reflections
007-407-300



Fawn
007-407-120



Black Nickel
007-407-022



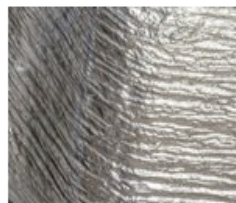
Pearl
007-407-330



Cobalt Copper
007-407-010



Platinum
007-407-500



JSG *Oceana* Lustrous colorations are an art form. No two sinks are exactly alike.



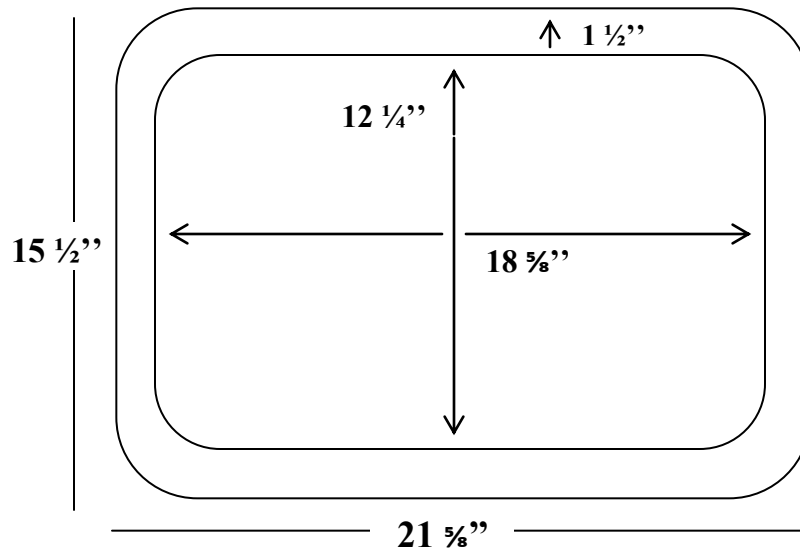
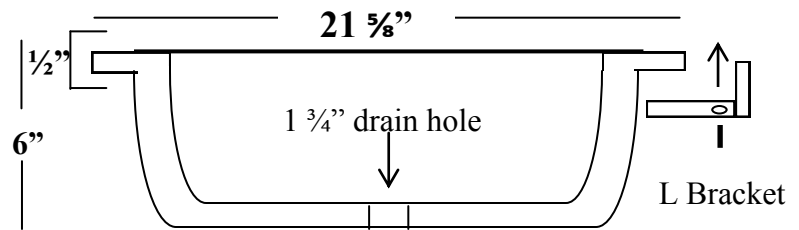
215 North 4th Street, Jeannette, PA 15644 ph:724.523.5567 fax:724.523.0123 www.jsgoceana.com

Made in the U.S.A.

JSG Oceana Oasis Rectangle Undermount Sinks

Undermount Sinks

- Weight: approx. 23.5 lbs.
- Can be installed as a drop-in
- Height: 6"
- Depth: 5 1/2"



Top rim: 1 1/2"
Underneath rim: 1"

Undermount Installation:

1. Apply a clear epoxy/caulking to the top rim of the undermount and then hold it in place under the countertop.
2. Screw "L" brackets into countertop from underneath.

Template included with sink:

Templates are supplied only as a guideline. The physical use of the sink will assure an accurate cut-out.



215 North 4th Street, Jeannette, PA 15644 ph:724.523.5567 fax:724.523.0123 www.jsgoceana.com

Made in the U.S.A.