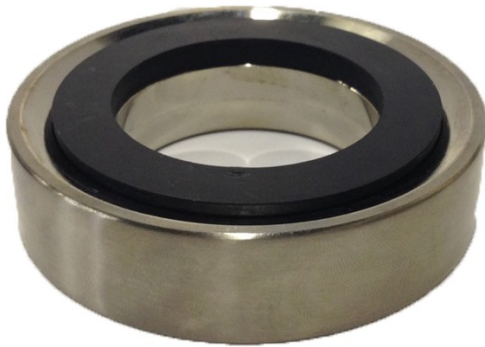


# JSG Oceana Vessel Mounting Rings

- Fits all JSG *Oceana* sinks with 1 3/4" drain hole
- Includes rubber washer seal
- Material: Brass
- 3"W x 3/4"H
- Interior Diameter: 1 3/4"



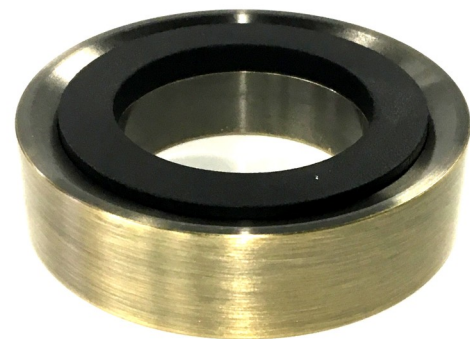
**Brushed Nickel Vessel Mounting Ring  
(MRBrNick)**



**Chrome Vessel Mounting Ring  
(MRChr)**



**Oil-Rubbed Bronze Vessel Mounting Ring  
(MROrb)**



**Brushed Bronze Vessel Mounting  
Ring (MRBrBrnz)**



# JSG Oceana Vessel Mounting Rings

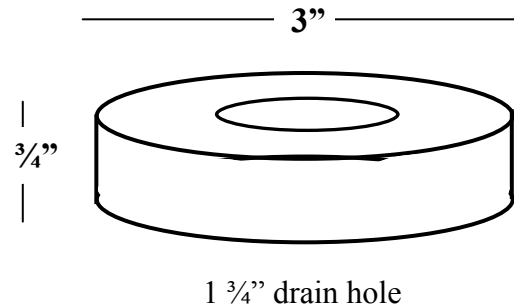
MODEL #MR-XXX

*Includes Rubber Washer Seal*

## Product Information & Diagram

Fixture*	Exterior Diameter	Interior Diameter	Thickness
Mounting Ring	3"	1 3/4"	3/4"

\*Approximate measurements for comparison only.



## Installation Instructions

**Before installing, inspect the sink and mounting ring for damage. Do not install a damaged unit. No returns accepted after installation, unless product is mechanically defected. Store the sink and mounting ring in the protective carton whenever possible.**

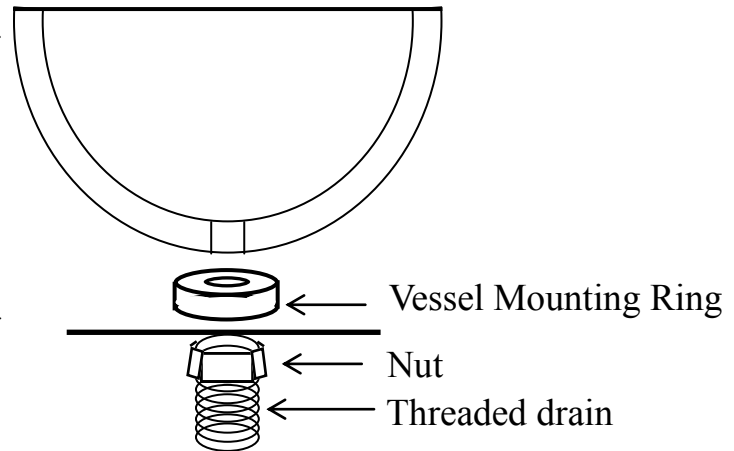
Remember, it is your responsibility to follow all local plumbing and building codes.

Drill a hole in countertop slightly larger than the width of your drain. (no less than 1 3/8" and no larger than 1 1/2"). Apply a thin layer of plumber's putty or clear silicone between the mounting ring and countertop.

Place the vessel mounting ring on the countertop. Set the vessel sink on mounting ring, making sure the rubber washer seal sits flush against the bottom of the vessel and in the mounting ring groove.

Drain will go through vessel and drain hole in countertop. Hand tighten drain underneath countertop. **DO NOT OVERTIGHTEN.**

Requirements vary for installation in a granite, marble, stone or synthetic countertop. Please contact your fabricator for specific details.



## Care and Cleaning Instructions

- After use, wipe your vessel mounting ring dry with a clean soft cloth. To clean, wipe with a damp cloth and dry with a soft cloth.
- If necessary, regular Windex can be used. Do not use harsh alkali or acid based detergents, abrasive polishes, or scouring cleansers when cleaning JSG *Oceana* vessel mounting rings. S.O.S. pads and Scotch Brite Pads are not permitted as they will scratch our decorative finishes.
- Do not leave coffee or vinegar laying in the bottom of the sink basin or on any products.



215 North 4<sup>th</sup> Street, Jeannette, PA 15644 ph:724.523.5567 fax:724.523.0123 [www.jsgoceana.com](http://www.jsgoceana.com)

Made in the U.S.A.